

Find prostate cancer across local and distant of recurrence

Confidence. Confirmed.



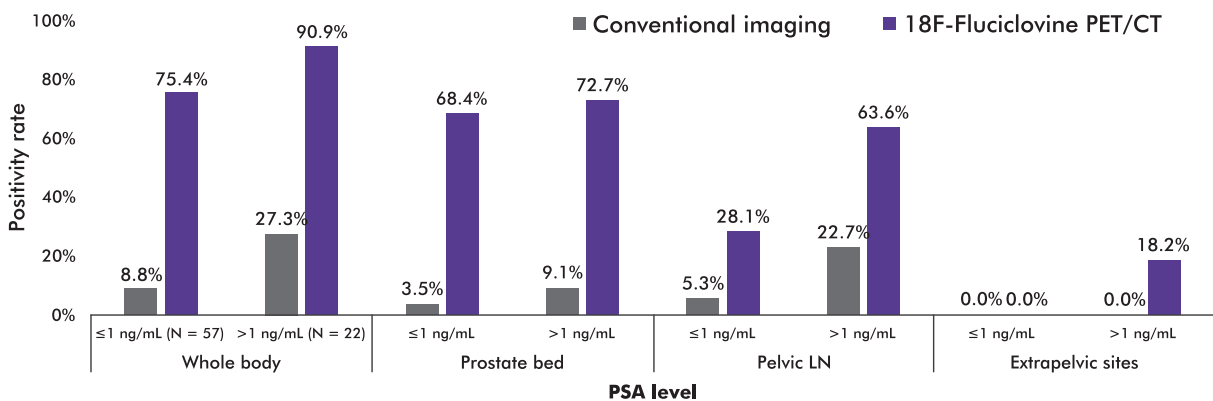
US FDA approved in 2016, EMA approved in 2017, and Taiwan FDA approved in 2020



Recommended to use in major clinical guidelines, including NCCN, ACR, RADAR III and ASCO¹⁻⁴.



Axumin imaging demonstrated a high detection rate (~80% overall) across regions compared to conventional imaging (14%)⁵.



Axumin-guided radiotherapy improved 12% and 24% event-free survival at year 3 and 4 compared with conventional imaging⁶.

RANDOMIZATION (N=165)

ARM 1 (n=82)

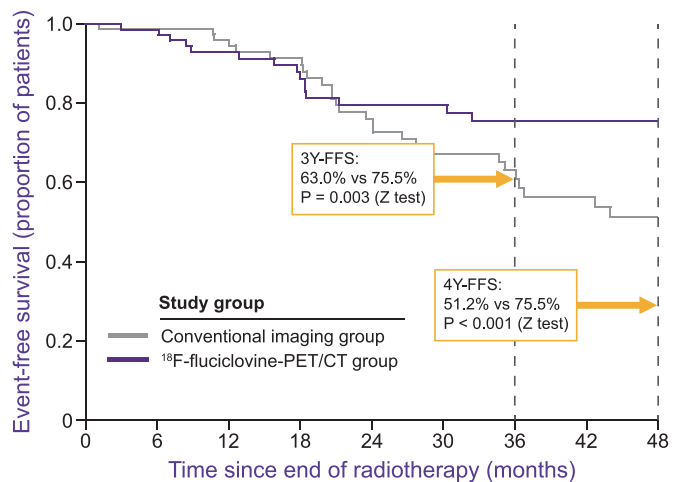
- Radiotherapy planned based on conventional imaging

ARM 2 (n=83)

- Treatment decision and planning volumes based on conventional imaging

Axumin scan conducted

- Radiotherapy decisions and planning based on Axumin scan



INDICATION

Axumin[®] (fluciclovine F 18) injection is indicated for positron emission tomography (PET) imaging in men with suspected prostate cancer recurrence based on elevated blood prostate specific antigen (PSA) levels following prior treatment.

Reference

1 NCCN Clinical Practice Guidelines for Prostate Cancer (Version v1.2023). 2 Expert Panel on Urologic Imaging; Froemming AT, Verma S, Eberhardt SC, et al. J Am Coll Radiol. 2018;15(5S):S132-S149. 3 Crawford ED, Koo PJ, Shore N, et al. J Urol. 2018;201:682-692. 4 Trabulsi EJ, Rumble RB, Jadvar H, et al. J Clin Oncol. 2020;38(17):1963-1996. 5 Abiodun-Ojo OA, Jani AB, Akintayo AA, et al. J Nucl Med. 2021;ijnmed.120.256784. 6 Jani AB, Schreibmann E, Goyal S, et al. Lancet. 2021;S0140-6736(21)00581-X.



GMS
GLOBAL MEDICAL SOLUTIONS